

SKETCH SHOWING TOPOGRAPHY OF  
**55 PORT STREET EAST**  
 CITY OF MISSISSAUGA  
 REGIONAL MUNICIPALITY OF PEEL

SCALE 1 : 250

J.D. BARNES LIMITED  
 © COPYRIGHT

METRIC DISTANCES AND/OR COORDINATES SHOWN ON THIS PLAN ARE IN METRES AND CAN BE CONVERTED TO FEET BY DIVIDING BY 0.3048.

**NOTES**

BEARINGS ARE UTM GRID, DERIVED FROM REAL TIME NETWORK (RTN) OBSERVATIONS, UTM ZONE 17, NAD83 (CSRS) (2010.0).  
 DISTANCES ARE GROUND AND CAN BE CONVERTED TO GRID BY MULTIPLYING BY THE COMBINED SCALE FACTOR OF 0.999754.  
 BOUNDARY INFORMATION IS COMPILED FROM AVAILABLE PAPER RECORDS, ROTATED TO GRID BEARINGS, AND HAS NOT BEEN VERIFIED BY ACTUAL FIELD MEASUREMENTS.

**ELEVATION NOTE**

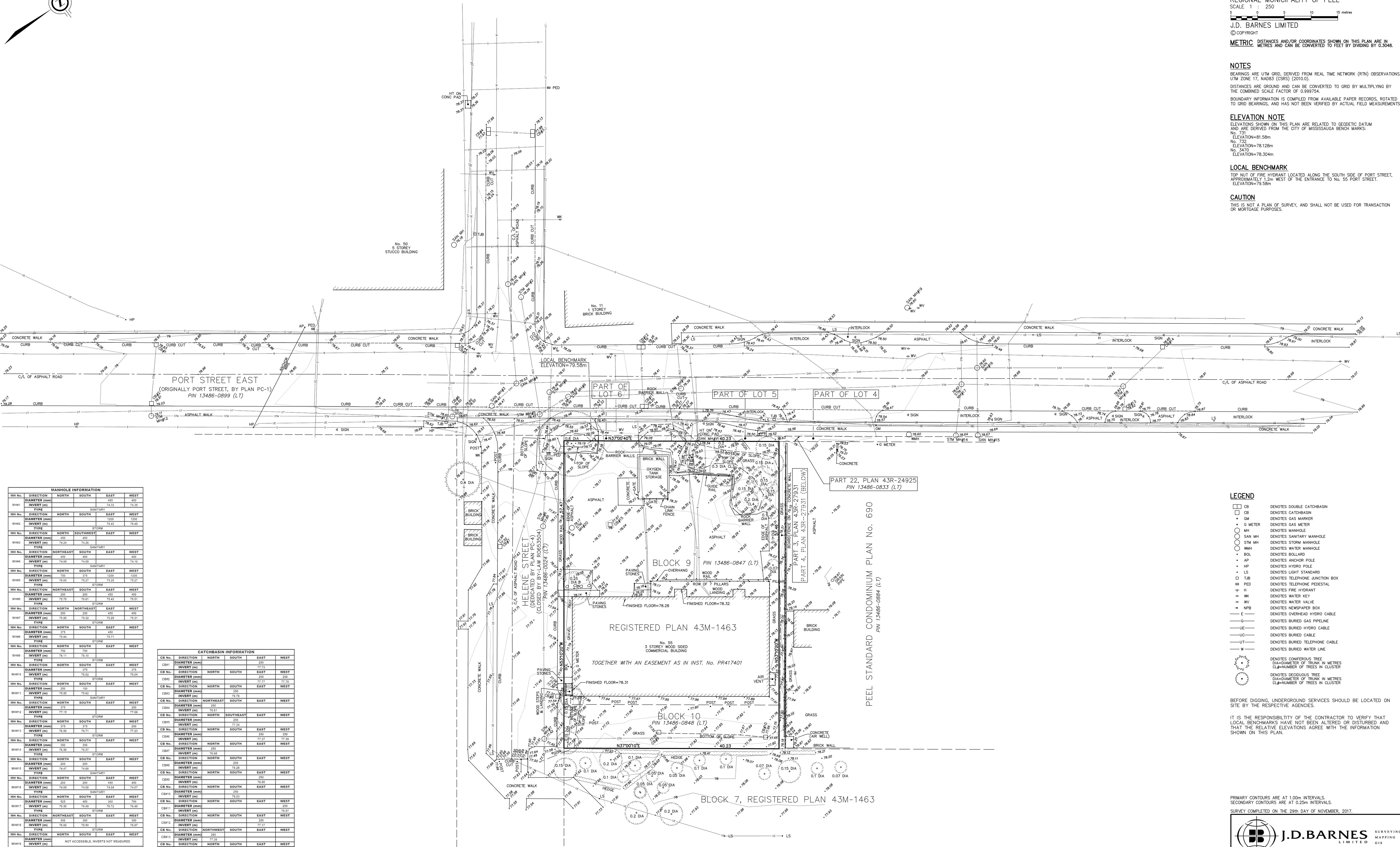
ELEVATIONS SHOWN ON THIS PLAN ARE RELATED TO GEODETIC DATUM AND ARE DERIVED FROM THE CITY OF MISSISSAUGA BENCH MARKS:  
 No. 731  
 ELEVATION=81.58m  
 No. 732  
 ELEVATION=78.128m  
 No. 3470  
 ELEVATION=78.304m

**LOCAL BENCHMARK**

TOP NUT OF FIRE HYDRANT LOCATED ALONG THE SOUTH SIDE OF PORT STREET, APPROXIMATELY 1.2m WEST OF THE ENTRANCE TO NO. 55 PORT STREET.  
 ELEVATION=79.58m

**CAUTION**

THIS IS NOT A PLAN OF SURVEY, AND SHALL NOT BE USED FOR TRANSACTION OR MORTGAGE PURPOSES.



MANHOLE INFORMATION				
MH No.	DIRECTION	NORTH	SOUTH	EAST
MH#1	DIRECTION	NORTH	SOUTH	EAST
	DIAMETER (mm)	450	450	450
	INVERT (m)	74.33	74.33	74.33
	TYPE	SANITARY	EAST	WEST
MH#2	DIRECTION	NORTH	SOUTH	EAST
	DIAMETER (mm)	1000	1000	1000
	INVERT (m)	75.43	75.45	75.45
	TYPE	STORM		
MH#3	DIRECTION	NORTH	SOUTHWEST	EAST
	DIAMETER (mm)	450	450	450
	INVERT (m)	74.24	74.26	74.26
	TYPE	SANITARY	EAST	WEST
MH#4	DIRECTION	NORTHEAST	SOUTH	EAST
	DIAMETER (mm)	450	450	450
	INVERT (m)	74.08	74.09	74.10
	TYPE	SANITARY		
MH#5	DIRECTION	NORTH	SOUTH	EAST
	DIAMETER (mm)	750	750	1200
	INVERT (m)	73.95	73.97	73.95
	TYPE	STORM		
MH#6	DIRECTION	NORTHEAST	SOUTH	EAST
	DIAMETER (mm)	250	250	450
	INVERT (m)	73.70	73.61	73.61
	TYPE	STORM		
MH#7	DIRECTION	NORTH	NORTHEAST	EAST
	DIAMETER (mm)	250	250	450
	INVERT (m)	73.95	73.92	73.93
	TYPE	STORM		
MH#8	DIRECTION	NORTH	SOUTH	EAST
	DIAMETER (mm)	375	450	450
	INVERT (m)	73.84	73.71	73.71
	TYPE	STORM		
MH#9	DIRECTION	NORTH	SOUTH	EAST
	DIAMETER (mm)	750	750	750
	INVERT (m)	73.11	73.10	73.10
	TYPE	STORM		
MH#10	DIRECTION	NORTH	SOUTH	EAST
	DIAMETER (mm)	375	450	450
	INVERT (m)	73.02	73.01	73.01
	TYPE	STORM		
MH#11	DIRECTION	NORTH	SOUTH	EAST
	DIAMETER (mm)	450	450	450
	INVERT (m)	73.55	73.52	73.52
	TYPE	SANITARY	EAST	WEST
MH#12	DIRECTION	NORTH	SOUTH	EAST
	DIAMETER (mm)	375	450	450
	INVERT (m)	77.15	77.11	77.02
	TYPE	STORM		
MH#13	DIRECTION	NORTH	SOUTH	EAST
	DIAMETER (mm)	450	450	450
	INVERT (m)	73.95	73.71	73.73
	TYPE	STORM		
MH#14	DIRECTION	NORTH	SOUTH	EAST
	DIAMETER (mm)	350	350	350
	INVERT (m)	73.56	73.57	73.57
	TYPE	STORM		
MH#15	DIRECTION	NORTH	SOUTH	EAST
	DIAMETER (mm)	450	450	450
	INVERT (m)	74.47	74.68	74.68
	TYPE	SANITARY	EAST	WEST
MH#16	DIRECTION	NORTH	SOUTH	EAST
	DIAMETER (mm)	200	200	450
	INVERT (m)	74.08	74.08	74.07
	TYPE	SANITARY		
MH#17	DIRECTION	NORTH	SOUTH	EAST
	DIAMETER (mm)	300	300	750
	INVERT (m)	73.50	73.49	73.49
	TYPE	STORM		
MH#18	DIRECTION	NORTHEAST	SOUTH	EAST
	DIAMETER (mm)	300	300	300
	INVERT (m)	73.92	73.92	73.87
	TYPE	STORM		
MH#19	DIRECTION	NORTH	SOUTH	EAST
	DIAMETER (mm)	300	300	300
	INVERT (m)	73.58	73.58	73.58
	TYPE	NOT ACCESSIBLE, INVERTS NOT MEASURED		
MH#20	DIRECTION	NORTHEAST	SOUTH	EAST
	DIAMETER (mm)	300	300	300
	INVERT (m)	73.62	73.54	73.54
	TYPE	STORM		

CATCHBASIN INFORMATION				
CB No.	DIRECTION	NORTH	SOUTH	EAST
CB#1	DIRECTION	NORTH	SOUTH	EAST
	DIAMETER (mm)	250	250	250
	INVERT (m)	77.73	77.74	77.74
CB#2	DIRECTION	NORTH	SOUTH	EAST
	DIAMETER (mm)	250	250	250
	INVERT (m)	77.77	77.73	77.73
CB#3	DIRECTION	NORTH	SOUTH	EAST
	DIAMETER (mm)	250	250	250
	INVERT (m)	73.95	73.95	73.95
CB#4	DIRECTION	NORTHEAST	SOUTH	EAST
	DIAMETER (mm)	250	250	250
	INVERT (m)	73.91	73.91	73.91
CB#5	DIRECTION	NORTH	SOUTHEAST	EAST
	DIAMETER (mm)	250	250	250
	INVERT (m)	77.74	77.74	77.74
CB#6	DIRECTION	NORTH	SOUTH	EAST
	DIAMETER (mm)	250	250	250
	INVERT (m)	77.23	77.23	77.23
CB#7	DIRECTION	NORTH	SOUTH	EAST
	DIAMETER (mm)	250	250	250
	INVERT (m)	73.68	73.68	73.68
CB#8	DIRECTION	NORTH	SOUTH	EAST
	DIAMETER (mm)	250	250	250
	INVERT (m)	73.28	73.28	73.28
CB#9	DIRECTION	NORTH	SOUTH	EAST
	DIAMETER (mm)	250	250	250
	INVERT (m)	73.59	73.59	73.59
CB#10	DIRECTION	NORTH	SOUTH	EAST
	DIAMETER (mm)	250	250	250
	INVERT (m)	73.03	73.04	73.04
CB#11	DIRECTION	NORTH	SOUTH	EAST
	DIAMETER (mm)	250	250	250
	INVERT (m)	73.87	73.87	73.87
CB#12	DIRECTION	NORTH	SOUTH	EAST
	DIAMETER (mm)	250	250	250
	INVERT (m)	73.58	73.58	73.58
CB#13	DIRECTION	NORTH	SOUTH	EAST
	DIAMETER (mm)	250	250	250
	INVERT (m)	73.58	73.58	73.58
CB#14	DIRECTION	NORTH	SOUTH	EAST
	DIAMETER (mm)	250	250	250
	INVERT (m)	73.50	73.50	73.50
CB#15	DIRECTION	NORTH	SOUTH	EAST
	DIAMETER (mm)	200	200	200
	INVERT (m)	73.81	73.77	73.77

LEGEND	
□ CB	DENOTES DOUBLE CATCHBASIN
□ CB	DENOTES CATCHBASIN
• GM	DENOTES GAS MARKER
○ G METER	DENOTES GAS METER
○ MH	DENOTES MANHOLE
○ SAN MH	DENOTES SANITARY MANHOLE
○ STM MH	DENOTES STORM MANHOLE
○ WMH	DENOTES WATER MANHOLE
• BOL	DENOTES BOLLARD
• AP	DENOTES ANCHOR POLE
• HP	DENOTES HYDRO POLE
• LS	DENOTES LIGHT STANDARD
• T/B	DENOTES TELEPHONE JUNCTION BOX
• PED	DENOTES TELEPHONE PEDESTAL
• H	DENOTES FIRE HYDRANT
• WK	DENOTES WATER KEY
• WV	DENOTES WATER VALVE
• NP	DENOTES NEWSPAPER BOX
• E	DENOTES OVERHEAD HYDRO CABLE
• G	DENOTES BURIED GAS PIPELINE
• LC	DENOTES BURIED HYDRO CABLE
• UC	DENOTES BURIED CABLE
• UT	DENOTES BURIED TELEPHONE CABLE
• W	DENOTES BURIED WATER LINE
○	DENOTES CONIFEROUS TREE
○	DIAMETER OF TRUNK IN METRES
CL=	NUMBER OF TREES IN CLUSTER
○	DENOTES DECIDUOUS TREE
○	DIAMETER OF TRUNK IN METRES
CL=	NUMBER OF TREES IN CLUSTER

BEFORE DIGGING, UNDERGROUND SERVICES SHOULD BE LOCATED ON SITE BY THE RESPECTIVE AGENCIES.

IT IS THE RESPONSIBILITY OF THE CONTRACTOR TO VERIFY THAT LOCAL BENCHMARKS HAVE NOT BEEN ALTERED OR DISTURBED AND THAT THE RELATIVE ELEVATIONS AGREE WITH THE INFORMATION SHOWN ON THIS PLAN.

PRIMARY CONTOURS ARE AT 1.00m INTERVALS.  
 SECONDARY CONTOURS ARE AT 0.25m INTERVALS.  
 SURVEY COMPLETED ON THE 29th DAY OF NOVEMBER, 2017.

**J.D. BARNES** SURVEYING MAPPING GIS  
 LAND INFORMATION SPECIALISTS  
 40 WISLARIATOR WAY, SUITE A, MILTON, ON L9T 3C1  
 T: (905) 875-9955 F: (905) 875-9956 www.jdbarnes.com

DRAWN BY: AP CHECKED BY: AB REFERENCE NO.: 17-30-182-00  
 FILE: G:\17-30-182\00\Drawing\17-30-182\_topo.dgn DATED: DECEMBER 14, 2017  
 PLOTTED: 12/17/2017