

LAKE SHORE ROAD (FORMERLY TORONTO STREET BY PLAN PC-II) PIN 13463 - 0076

LAKE SHORE ROAD EAST (ROAD ALLOWANCE BETWEEN BLOCKS 'B' AND 'C')

ELMWOOD AVENUE

PLAN 43M-114-63

I CERTIFY THAT THIS PLAN IS REGISTERED IN THE LAND REGISTRY OFFICE FOR THE LAND TITLES DIVISION OF P.E.E.L. (No. 43) AT 10:08 O'CLOCK ON THE 23rd DAY OF May, 2001 AND ENTERED IN THE PARCEL REGISTER FOR PROPERTY IDENTIFIER NUMBER 13486-0812 TO 13486-0815, 13486-0825, 13486-0822, 13486-0418, 13486-0820, 13486-0821.

AND REQUIRED DOCUMENTS ARE REGISTERED AS PLAN DOCUMENT No. PR 81446

ASSR DEL LAND REGISTRAR

THIS PLAN COMPRISES PART OF PIN 13486-085, 13486-084, 13486-083, 13486-082 AND ALL OF PIN 13486-085, 13486-082, 13486-081, 13486-0820, 13486-0821.

PART OF BLOCK 3 SUBJECT TO EASEMENT IN PG277.
 PART OF BLOCKS 7 AND 8, AND PART OF ST. LAWRENCE DRIVE AND PORT STREET EAST SUBJECT TO EASEMENT IN PG2990.
 PART OF BLOCKS 7 AND 8 SUBJECT TO EASEMENT IN PG3849.
 PART OF BLOCKS 7 AND 8, AND PART OF ST. LAWRENCE DRIVE SUBJECT TO EASEMENT IN PG3771.
 PART OF BLOCKS 7 AND 8 SUBJECT TO EASEMENT IN PG36500.
 PART OF BLOCKS 7 AND 8 SUBJECT TO EASEMENT IN PG36500.

PLAN OF SUBDIVISION OF

ALL OF LOTS 1, 2, 3, 4, 20 AND ALL OF THE LANE LYING SOUTHWEST OF LOTS 1, 2, 3 AND 4 REGISTERED PLAN 306 AND ALL OF LOTS 3, 4, 5, 6, 7, 8 AND PART OF LOTS 9 AND 10, REGISTERED PLAN D-09, AND PART OF LOTS 1, 2, 3, 4, AND 5, SOUTH SIDE OF LAKE SHORE ROAD (FORMERLY TORONTO STREET), ECR, PLAN PC-1 AND PART OF LOTS 1, 2, 3, 4 AND 5, NORTH SIDE OF PORT STREET, ECR, PLAN PC-1 AND PART OF LOTS 1, 2, 3, 4, 5 AND 6, SOUTH SIDE OF ANN STREET (CLOSED BY BY-LAW 0227-2000, INSTRUMENT LT2139121), SOUTH SIDE OF LAKE SHORE ROAD (FORMERLY TORONTO STREET) AND PART OF ANN STREET (CLOSED BY BY-LAW 0227-2000, INSTRUMENT LT2139121), SOUTH SIDE OF PORT STREET, PLAN PC-1 AND PART OF HURONTARIO STREET, FORMERLY HURON STREET, PLAN PC-1 NOW KNOWN AS PORT STREET EAST AND PART OF HURONTARIO STREET, FORMERLY HURON STREET, PLAN PC-1 (CLOSED BY BY-LAW 1479, INSTRUMENT NUMBER BY-LAW 969) AND PART OF BLOCK C, BROKEN FRONT RANGE, CREDIT INDIAN RESERVE AND PART OF WATER LOT LOCATION CL8677 AND ALL OF WATER LOT LOCATION CL1889 BEING PART OF THE BED OF LAKE ONTARIO IN FRONT OF PART OF BLOCK 'C', BROKEN FRONT RANGE, CREDIT INDIAN RESERVE, AND IN FRONT OF HURONTARIO STREET (FORMERLY HURON STREET), AND IN FRONT OF LOTS 1, 2, 3, 4, 5 AND 6, PLAN PC-1, AND IN FRONT OF ANN STREET (CLOSED BY BY-LAW 0227-2000 INSTRUMENT LT2139121).

GEOGRAPHIC TOWNSHIP OF TORONTO
 CITY OF MISSISSAUGA
 REGIONAL MUNICIPALITY OF P.E.E.L.

SCALE 1:500

J. D. BARNES LIMITED

OWNER'S CERTIFICATE

THIS IS TO CERTIFY THAT:

- BLOCKS 1 TO 11, BOTH INCLUSIVE, THE STREETS, NAMELY ST. LAWRENCE DRIVE AND ELMWOOD AVENUE, 0.30 RESERVES, NAMELY BLOCKS 12, 13, 14, 15 AND 16, HAVE BEEN LAID OUT IN ACCORDANCE WITH MY INSTRUCTIONS.
- THE STREETS ARE HEREBY DEDICATED TO THE CORPORATION OF THE CITY OF MISSISSAUGA AS PUBLIC HIGHWAYS.

DATED THE 10th DAY OF May, 2001.

F.S. PORT CREDIT DEVELOPMENT LIMITED

FRANK GIANNONE PRESIDENT
 BRUCE KERR TREASURER

"WE HAVE THE AUTHORITY TO BIND THE CORPORATION"

NOTES

BEARINGS ARE ASTROMERIC AND ARE REFERRED TO THE NORTHWESTERLY LIMIT OF PART 3 AS SHOWN ON DEPOSITED PLAN 43R-24778 AND HAVING A BEARING OF N 38° 02' 30" E.

- DENOTES SURVEY MONUMENT FOUND
- DENOTES SURVEY MONUMENT SET
- DENOTES STANDARD IRON BAR
- ⊕ DENOTES IRON BAR
- W DENOTES WITNESSES
- MEAS DENOTES MEASURED
- JDB DENOTES J.D. BARNES LIMITED
- PC-1 DENOTES PLAN OF TOWN PLOT OF PORT CREDIT
- ECR DENOTES EAST OF CREDIT RIVER
- CA DENOTES CUT ARROW
- CONC DENOTES CONCRETE NAIL
- P1 DENOTES PLAN OF SURVEY BY TARASOK, McMILLAN LTD., O.L.S. (JUNE 14, 1990)
- P2 DENOTES DEPOSITED PLAN 43R-24778

SURVEY MONUMENTS FOUND ARE J.D. BARNES LIMITED UNLESS OTHERWISE SPECIFIED.

METRIC DISTANCES SHOWN ON THIS PLAN ARE IN METRES AND CAN BE CONVERTED TO FEET BY DIVIDING BY 0.3048.

SURVEYOR'S CERTIFICATE

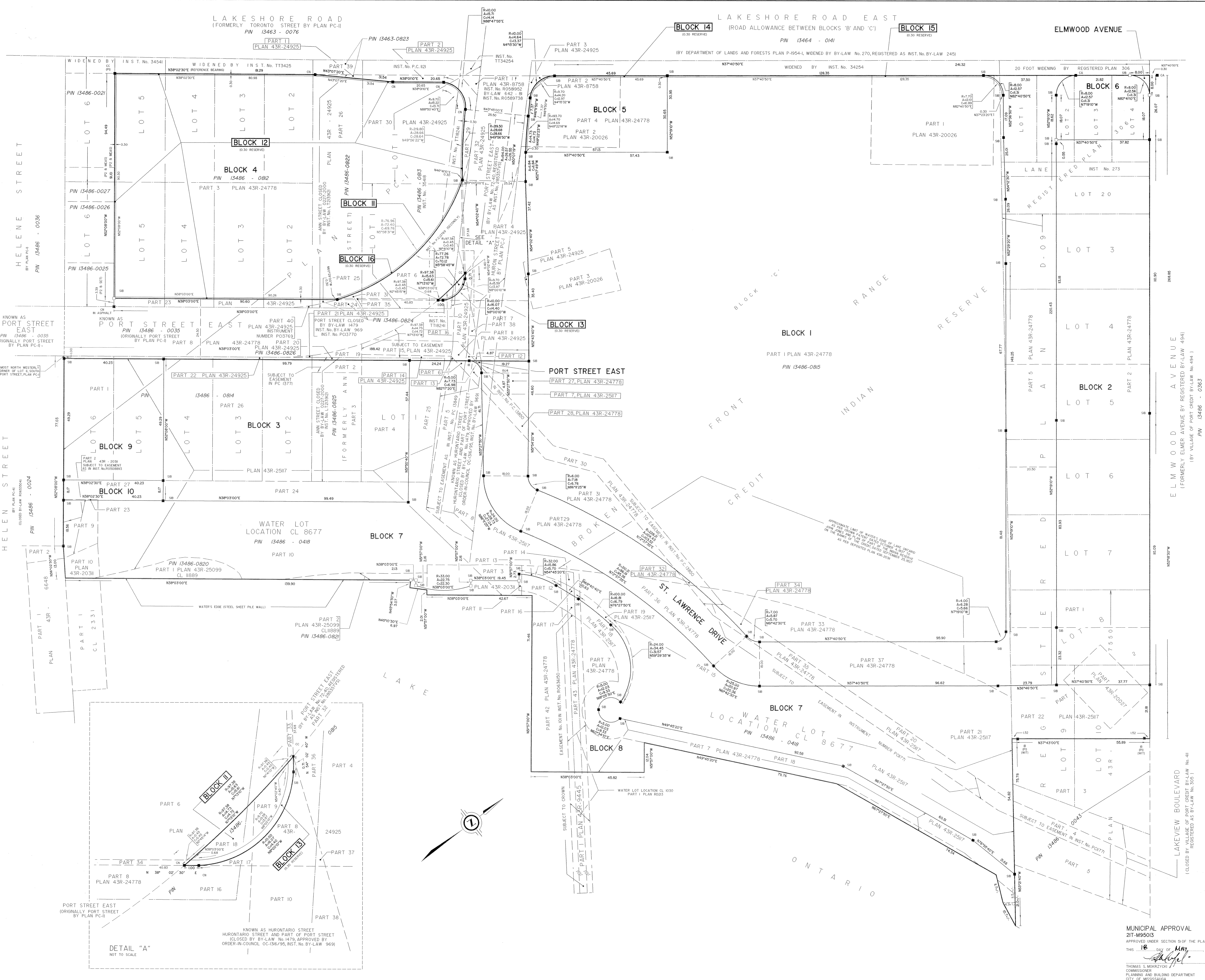
I CERTIFY THAT:

- THIS SURVEY AND PLAN ARE CORRECT AND IN ACCORDANCE WITH THE SURVEY ACT, THE SURVEYORS ACT AND THE LAND TITLES ACT AND THE REGULATIONS MADE UNDER THEM.
- THE SURVEY WAS COMPLETED ON THE 23rd DAY OF FEBRUARY, 2001.

DATE: May 9, 2001
 DAVID A. BLACK
 ONTARIO LAND SURVEYOR

MUNICIPAL APPROVAL
 21T-M9503
 APPROVED UNDER SECTION 51 OF THE PLANNING ACT, R.S.O. 1990
 THIS 16 DAY OF May, 2001
 THOMAS S. MOKRZYCKI
 COMMISSIONER
 PLANNING AND BUILDING DEPARTMENT
 CITY OF MISSISSAUGA

J.D. BARNES LIMITED
 SURVEYING MAPPING LAND INFORMATION SERVICES
 450 BRITANNIA ROAD EAST, SUITE 4508
 MISSISSAUGA, ONTARIO L4Z 3K9
 TELEPHONE: (905) 507-2767
 FAX: (905) 507-6977
 REFERENCE: 99-28-469-00-A
 FEBRUARY 28/2001



DETAIL "A"
 NOT TO SCALE

KNOWN AS HURONTARIO STREET
 HURONTARIO STREET AND PART OF PORT STREET
 CLOSED BY BY-LAW No. 1479, APPROVED BY
 ORDER-IN-COUNCIL, OCTOBER 9/95, REG. No. BY-LAW 9691

43M-114-63

99-28-469-00-A